



Inflammation, Microbiome & Alimentation  Gastro-Intestinal & Neuropsychiatric Effects

Strategy for Patient-Oriented Research

SPOR

Putting Patients First 

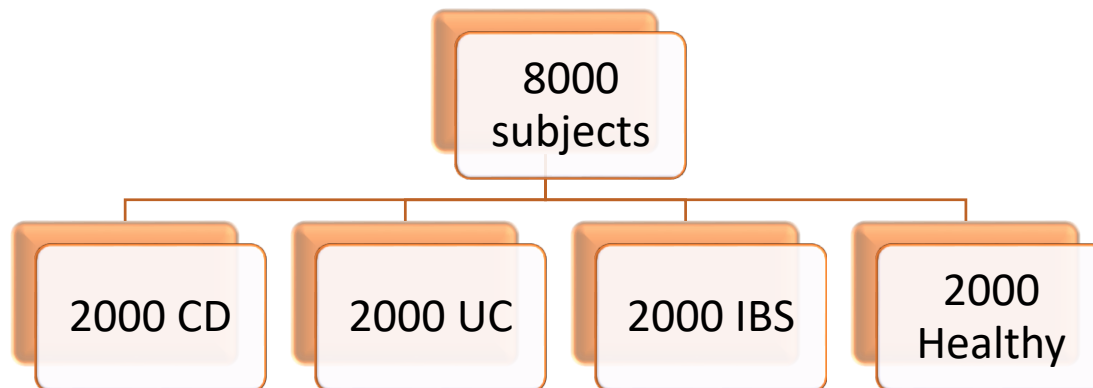
IMAGINE | Main Cohort Study



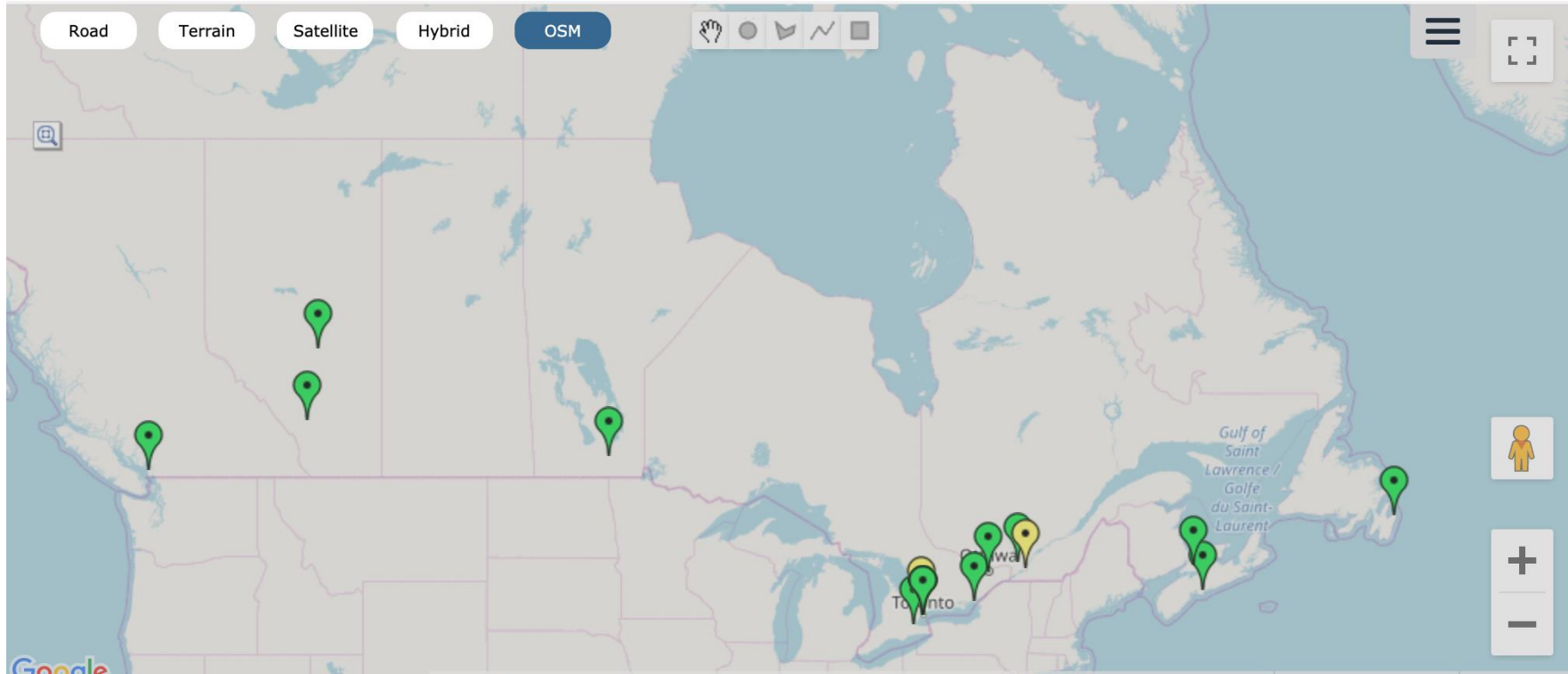
Inflammation, Microbiome & Alimentation Gastro-Intestinal & Neuropsychiatric Effects





- - Understand how genes, diet and mental health impact the gut microbiome in people with IBD & IBS
- - Subjects assessed annually for 4 years and submit blood, urine and stool samples & complete online questionnaires
- - Start Date: Oct 2017
- - Sites: 15 active sites; 3 pending sites



MAGIC | Recruitment Sites



-  Currently Recruiting
-  Ethics/legal contracts pending (Sick Kids/CIDCaNN sites, Montreal)



MAGIC | Recruitment Sites

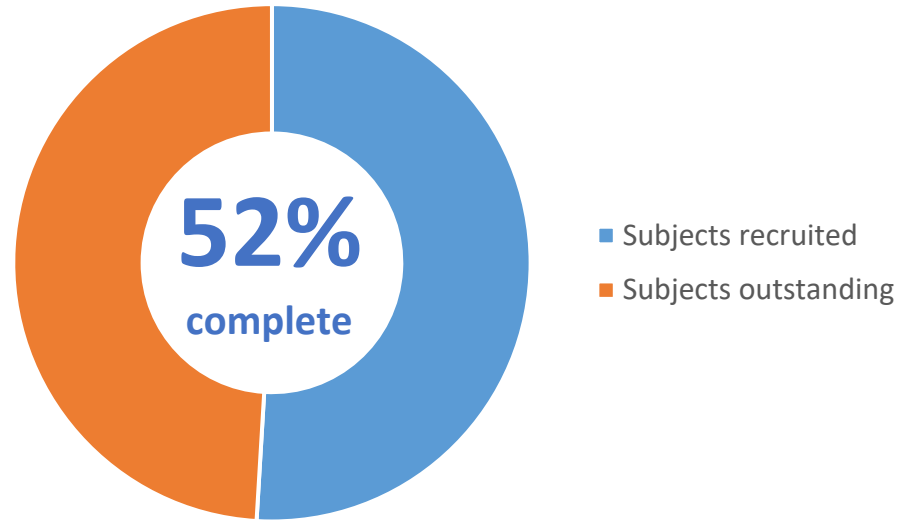


Inflammation, Microbiome & Alimentantion

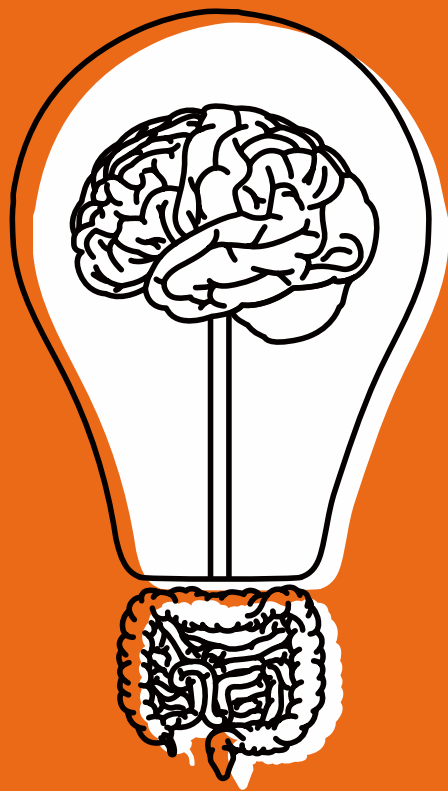


Site
21 McMaster University Medical Centre - Hamilton
22 IBD Clinical & Research Centre - Winnipeg
23 Hotel Dieu Hospital - Kingston
24 University of Calgary - Calgary
25 University of Alberta - Edmonton
26 IWK Health Centre - Halifax
27 NSHA, Centre for Clinical Research - Halifax
28 UHN Toronto Western Hospital - Toronto
29 Memorial University - St. John's
30 The Ottawa Hospital - Ottawa
31 GI Research Institute - Vancouver
32 Mount Sinai Hospital - Toronto
33 MUHC IBD Research Centre - Montreal

MAGIC | Recruitment Totals (as of Feb 10, 2020)



Subgroup	Recruited	Target	% Complete
CD	1665	2000	83%
UC	1058	2000	53%
IBS	671	2000	34%
Healthy	665	2000	33%
Total	4076	8000	52%



IMAGINE

Inflammation, Microbiome & Alimentation
Gastro-Intestinal & Neuropsychiatric Effects

Strategy for Patient-Oriented Research

SPOR

Putting Patients First 

www.imaginespor.com



@IMAGINESPOR



@IMAGINE_SPOR